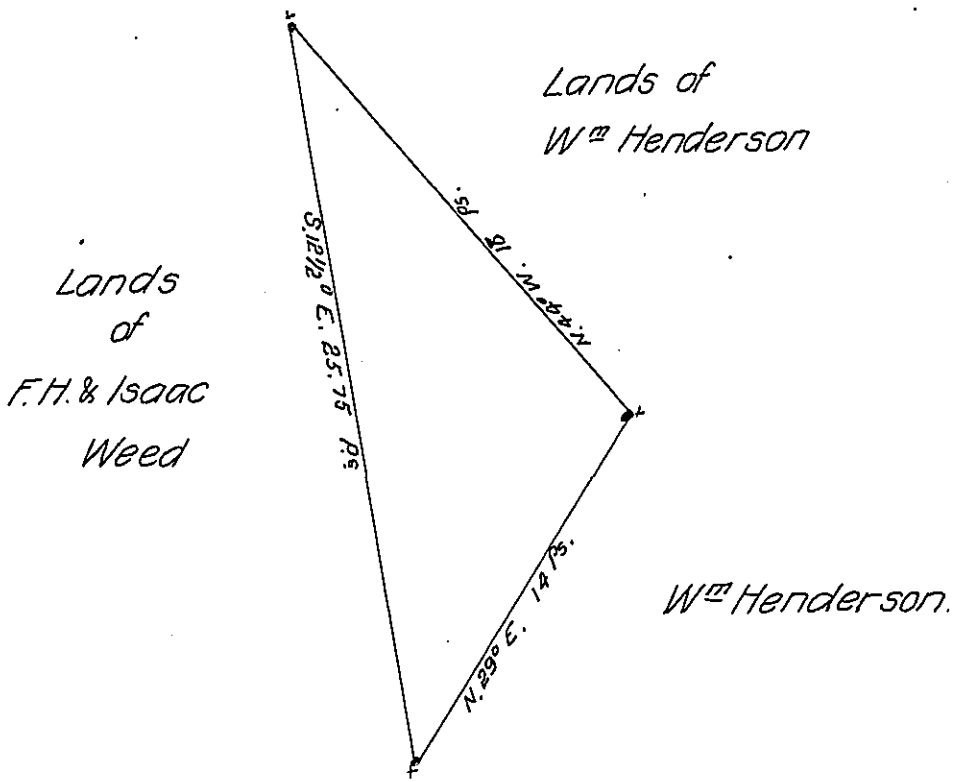


*Courses and distances in perches & hundredths*

*Beginning at the South West*

*Corner - an Oak tree*

Stat.	Bearings	Dist.
1 <sup>st</sup>	N. 29° E.	14.00
2 <sup>d</sup>	N. 44° W.	18.00
3 <sup>d</sup>	S. 12½ E.	25.75



*By Virtue of a warrant dated the 8<sup>th</sup> day of April A.D. 1868, Surveyed the 14<sup>th</sup> day of April A.D. 1868 for Isaac Weed the above described tract or piece of Land Situate in Oil Creek township in the County of Crawford. Containing one hundred and twenty one perches of Land.*

*To Hon. J.M. Campbell  
Surveyor General.*

*James Tryon*

*I, P.W. White, County Surveyor in and for the County of Crawford, do hereby Certify that the above Survy is true and correct.*

*P.W. White, County Surveyor.*

*IN TESTIMONY that the above is a copy of the original remaining on file in the Department of Internal Affairs of Pennsylvania, made conformably to an Act of Assembly approved the 16th day of February, 1833, I have hereunto set my Hand and caused the Seal of said Department to be affixed at Harrisburg, this Ninth day of July 1907*

*Henry Hovick*  
Secretary of Internal Affairs.